

PRO

Wireless Sensor Control and Entire Ecosystem

# Free Your Tool Monitoring



Available immediately  
Real Plug & Play

**Cost Advantage**  
Maintenance  
Efficiency  
Manpower  
Tool life  
Crash prevention



[www.eltimon.de](http://www.eltimon.de)

INDUSTRY  
4.0

Wireless Sensor Control and Entire Ecosystem

# Free Your Tool Monitoring



The complete system for the digitization of Live tools, angle heads and driven tools.





# eltimon<sup>®</sup>

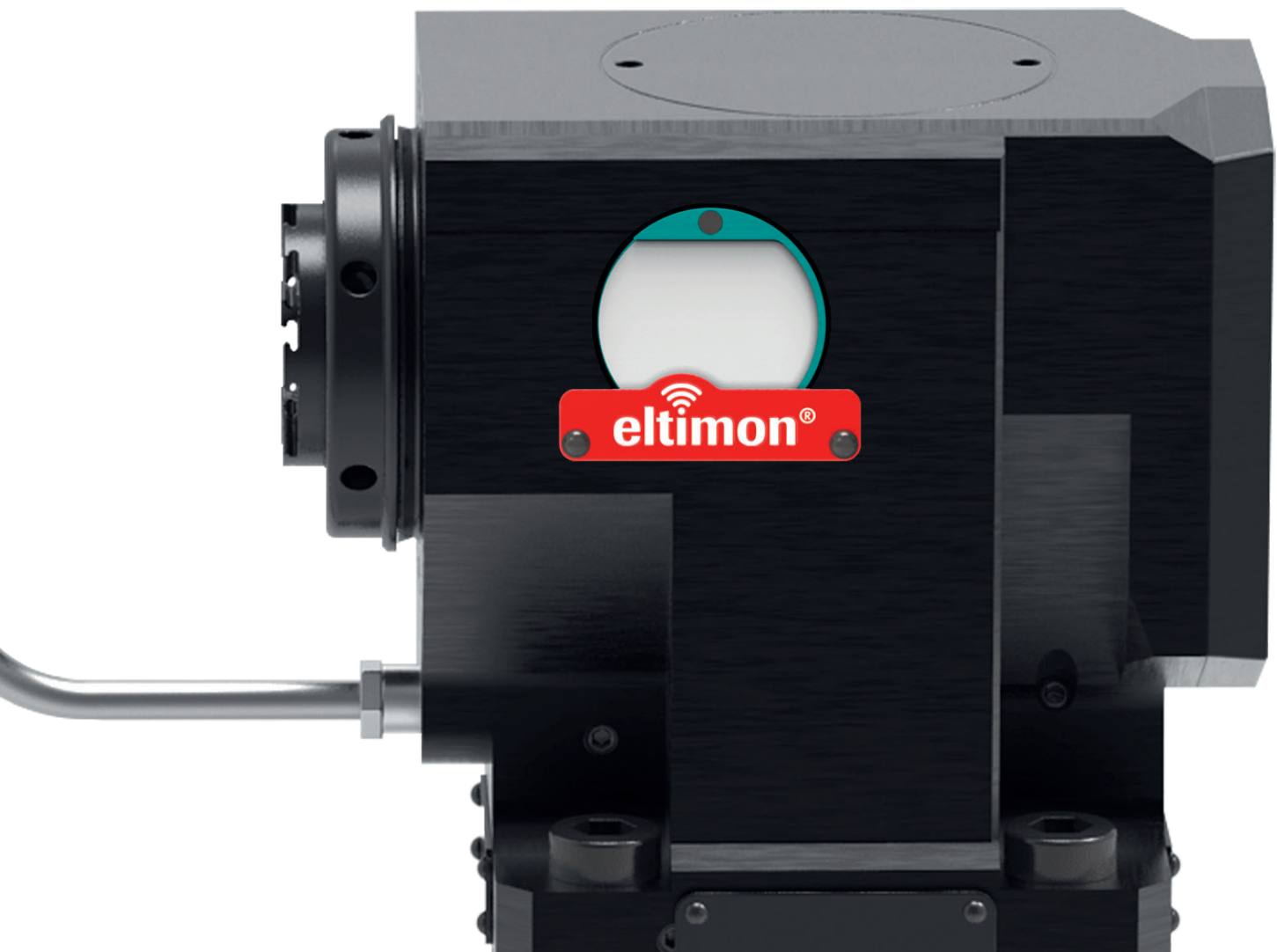
## PRO

### smart Gateway

Usage close to the machine area  
Power supply and internet connection  
5+ Years maintenance-free

### Vibration Control

Tool breakage and downtime prevention



Digitization for Complete Tool Management

# Highly Integrated Sensor System for Most Effective Productivity



Wireless data transfer\*  
directly via eltimon Reader  
or eltimon smart gateway to  
the eltimon® service portal  
and/or to the machine.



Proactive Action Instead of Expensive Reactions

# Process Data Acquisition and Evaluation



## Basic Data

Detailed information of the used tool



## Operating Hours

Accumulated operating hours since tool use



## Tool Temperature

with limit warning for critical areas



## Revolution Informations

Detailed usage values and recorded speed ranges



## Load Cycles

For example the number of holes drilled



## smart Gateway

Usage close to the machine area  
Power supply and internet connection



## Vibration Control

Tool breakage and downtime prevention

  
**eltimon**<sup>®</sup>  
PRO

## eltimon<sup>®</sup> ecosystem

Evaluations

Analyses

Trends and conditions

Limit warnings

Decision support

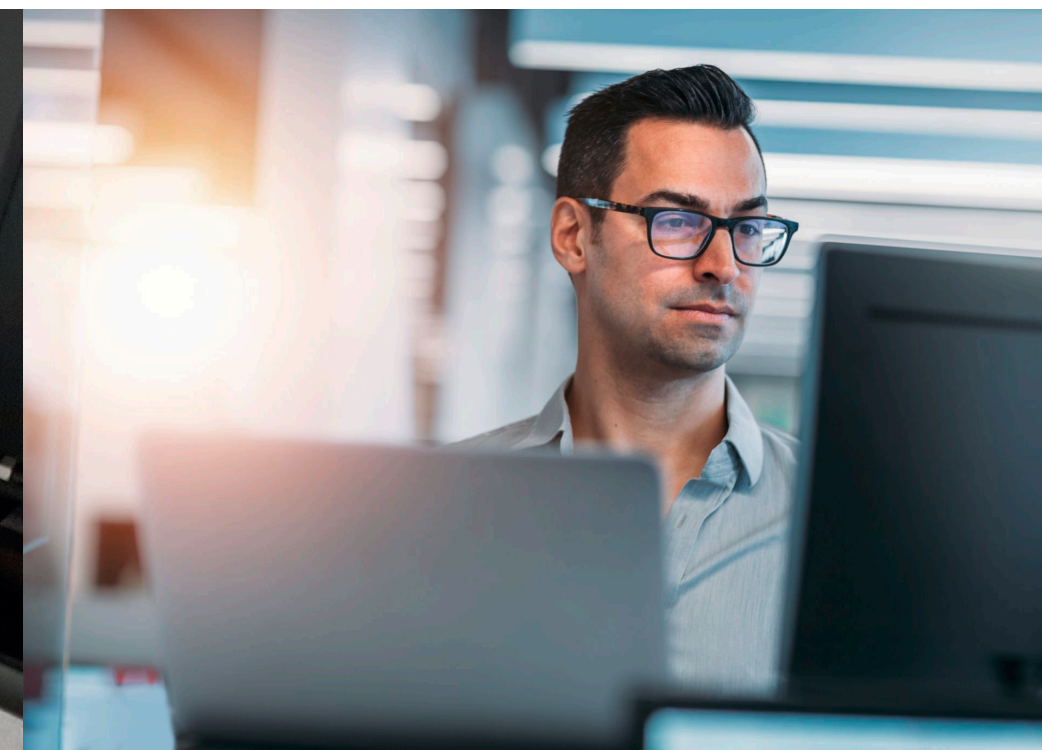
Memories

Transparency

History

\* Reader via NFC or BT

\* Gateway via Bluetooth



Why eltimon?

**eltimon is secure.**

**eltimon is easy to use.**

**eltimon is compact.**

**eltimon is smart (IIoT).**

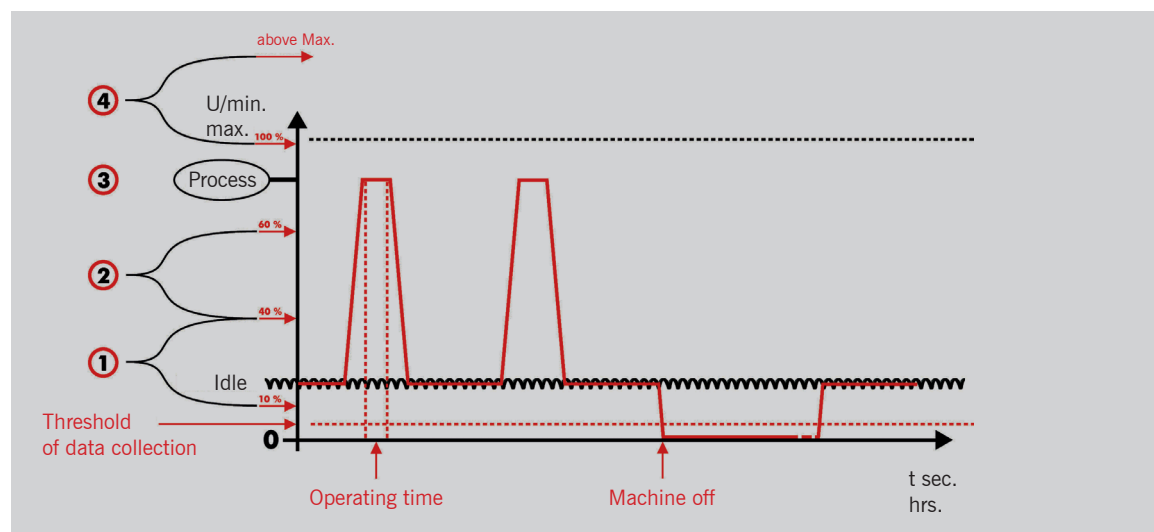
**eltimon is frugal.**

**eltimon is robust.**

**eltimon is sustainable.**

**eltimon is complete.**

eltimon  
Data structure



eltimon®

# eltimon in a Nutshell

## Secure

- Protection against unauthorized access
- Clear tool assignment
- All data anonymized
- 5-year hardware warranty

## User friendly

- Data is generated and saved fully automatically – in the tool!
- Fully automated transfer to the service portal
- Service portal management console for evaluations and analyses
- Intuitive, structured user interface
- Access anytime, anywhere

## Compact

Smallest sensors and Bluetooth/NFC chips allow a very compact and form-fitting design.

## Smart (Industry 4.0 / IIoT)

- eltimon integration in machine (Pro)
- Data usable for virtual factory
- Preventive maintenance control
- More transparency in production process

## Frugal

- Catch back technology for Deep sleep/  
Fast wake-up
- Up to 5 years without battery change

## Robust

- Very break-resistant composite material
- Extremely wear-resistant
- Completely resistant against flying chips
- Permeable for data transfer

## Sustainable

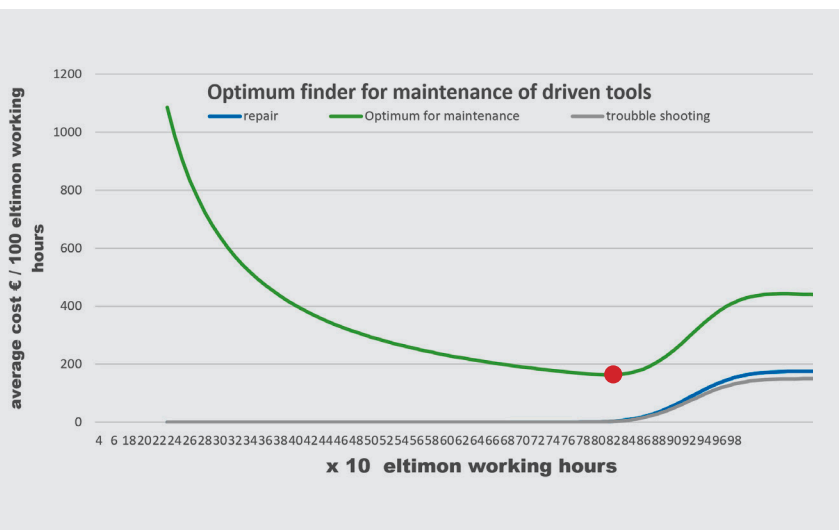
- Extends tool life
- Reduces material consumption and production waste
- Minimizes maintenance and spare parts
- Stabilizes the entire production process
- Saves standby tools

## Complete

From the sensor to the service portal, all components from a single source.

## Open

eltimon is an open, non-proprietary system.



## Optimal

### maintenance time

Determined by eltimon. A before or after would increase costs unnecessarily.

Wireless Sensor Control and Entire Ecosystem

# Free Your Tool Monitoring



mimatic GmbH  
Westendstraße 3  
87488 Betzigau (Germany)

Phone: +49 (831) 5 74 44-0  
Fax: +49 (831) 5 74 44-90  
info@eltimon.de

  
**eltimon**<sup>®</sup>

[www.eltimon.de](http://www.eltimon.de)