



GRIP Head office (Jinsung Eurotec co., ltd.)

#817 Daerung technotown 12nd Gasandigital 2 ro 14 Geumcheon-gu Seoul Republic of korea.

GRIP Factory

#b101-201 397 Seckcheon-ro Buchun-si Gyeonggi-do Republic of Korea

Tel.+82 32 624 0907~8

Fax.+82 32 624 0909

gripperfect@gmail.com

www.gripkorea.com

HYDRO-SWISS TURN

Precision, swiss type automatic lathe solution



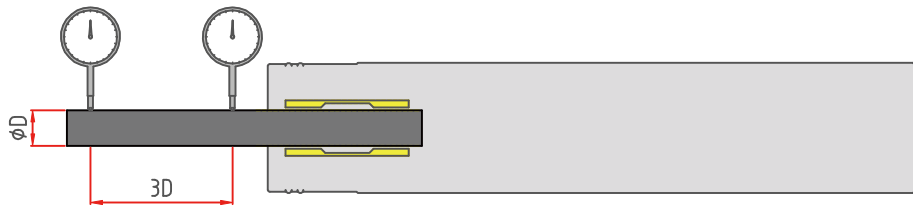
1 less than
micron



HYDRO-SWISS TURN

Ultra Precision.

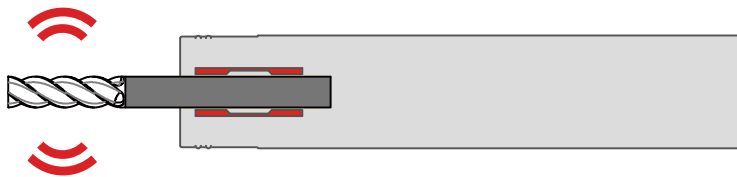
Hydraulic chuck always keeps the same run-out accuracy.



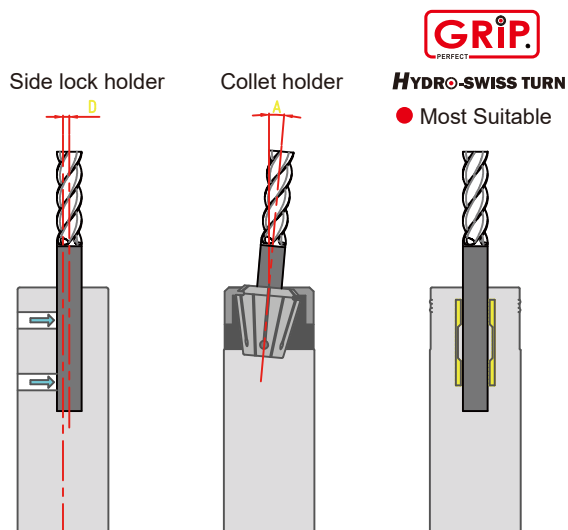
Standard type 0.003 T.I.R
UP type 0.001 T.I.R

Vibration Damping Function.

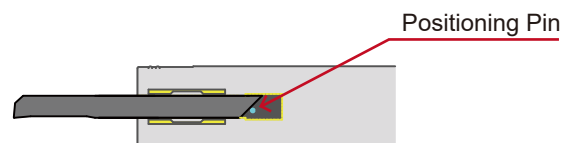
hydraulic chuck extends tool life



Hydraulic Chuck with Product Comparison



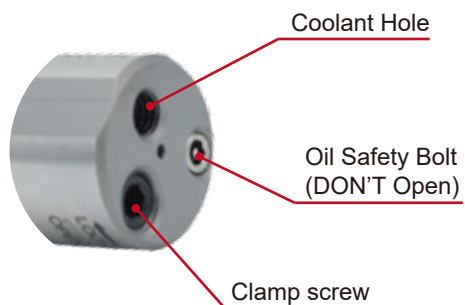
Boring for Precision High Positioning Accuracy



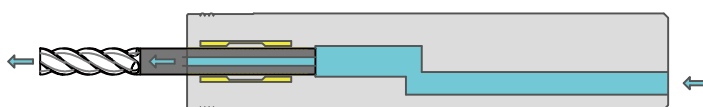
1 less than micron



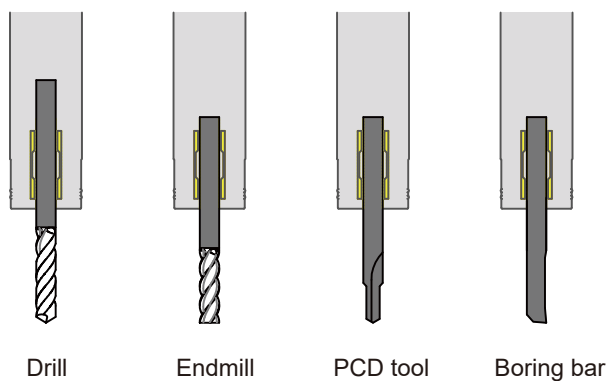
Easy Clamping Hydraulic System



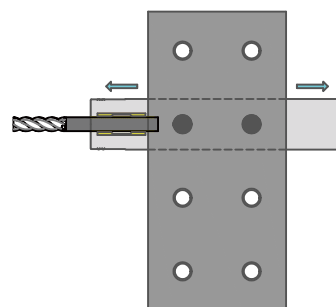
Coolant System



Various Operations



Easy and Free Axial Length Adjustment



SWISS TURN

Front Type



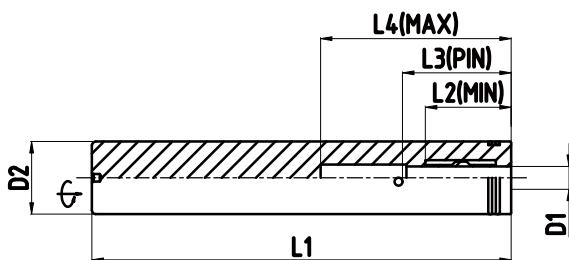
≡ Dimensions(mm)

ST19.05	D1	D2	D3	L1	L2	L3	L4	L5	Shape	Wrench	Type of machine
ST19.05-GST3-110	3	19.05	-	110	17.5	24	40	-		TR-3.0	C/ M16/ L20
ST19.05-GST4-110	4	19.05	-	110	21	26	40	-		TR-3.0	
ST19.05-GST6-110	6	19.05	-	110	23	29	52	-		TR-3.0	
ST19.05-GST8-110	8	19.05	-	110	28	34	52	-		TR-3.0	

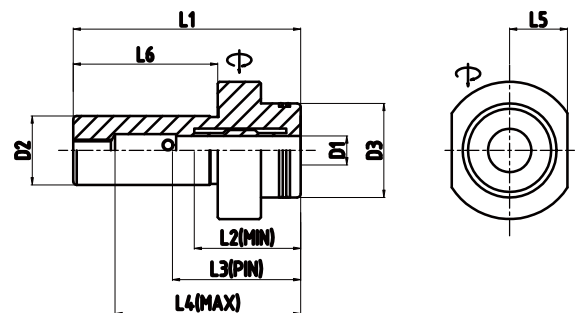
ST25.4	D1	D2	D3	L1	L2	L3	L4	L5	Shape	Wrench	Type of machine
ST25.4-GST3-110	3	25.4	-	110	17.5	24	40	-		TR-4.0	C/ M/ L32
ST25.4-GST4-110	4	25.4	-	110	21	26	40	-		TR-4.0	
ST25.4-GST6-110	6	25.4	-	110	23	29	52	-		TR-4.0	
ST25.4-GST8-110	8	25.4	-	110	28	34	52	-		TR-4.0	
ST25.4-GST10-110	10	25.4	-	110	29.5	36	55	-		TR-4.0	
ST25.4-GST12-110	12	25.4	-	110	31.5	38	58	-		TR-4.0	

- »h6 shank tools must be used.
- »T-wrench is must be ordered separately.
- »The inner diameter 8 and 12 can be used with various tools by using the hydro-sleeve.
- »All products center through coolant system.
- »Additional sizes and special designs available on request.

SWISS TURN



ST19.05/ ST25.4



ST19.05

Back Type

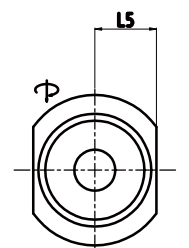
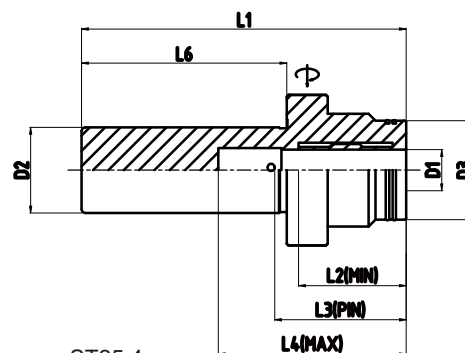
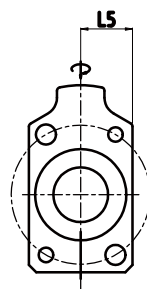
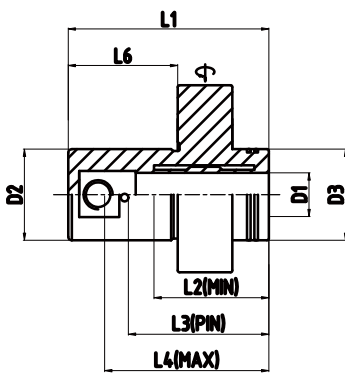
Citizen

≡ Dimensions(mm)

ST19.05	D1	D2	D3	L1	L2	L3	L4	L5	L6	Wrench	Type of machine
ST19.05-GST3-40/63	3	19.05	20	63	17.5	24	53	13.5	40	TR-4.0	
ST19.05-GST4-40/63	4	19.05	22	63	21	26	53	14	40	TR-4.0	
ST19.05-GST6-40/63	6	19.05	24	63	23	29	53	15	40	TR-4.0	C/ M16/ L20
ST19.05-GST8-40/63	8	19.05	26	63	28	34	53	16	40	TR-4.0	
ST19.05-GST10-40/63	10	19.05	28	63	29.5	36	53	17	40	TR-4.0	

ST25	D1	D2	D3	L1	L2	L3	L4	L5	L6	Wrench	Type of machine
ST25-GST4-30/55	4	25	25	55	21	26	45	14.2	30	TR-4.0	
ST25-GST6-30/55	6	25	25	55	23	29	45	14.2	30	TR-4.0	
ST25-GST8-30/55	8	25	25	55	28	34	45	14.2	30	TR-4.0	C/ L/ M20/32
ST25-GST10-30/55	10	25	25	55	29.5	36	45	14.2	30	TR-4.0	
ST25-GST12-30/55	12	25	25	55	31.5	38	45	14.2	30	TR-4.0	

ST25.4	D1	D2	D3	L1	L2	L3	L4	L5	L6	Wrench	Type of machine
ST25.4-GST4-40/75	4	25.4	19	75	21	26	46	14	40	TR-4.0	
ST25.4-GST6-40/75	6	25.4	20	75	23	29	51	15	40	TR-4.0	
ST25.4-GST8-40/75	8	25.4	23	75	28	36	51	16	40	TR-4.0	C/ L/ M32
ST25.4-GST10-40/75	10	25.4	27	75	29.5	36	56	17	40	TR-4.0	
ST25.4-GST12-40/75	12	25.4	29	75	31.5	38	56	18	40	TR-4.0	



SWISS TURN

Front Type

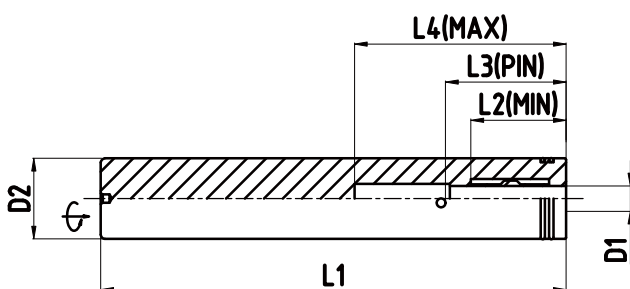


≡ Dimensions(mm)

ST16	D1	D2	D3	L1	L2	L3	L4	L5	Shape	Wrench	Type of machine
ST16-GST3-90	3	16	-	90	17.5	24	40	-		TR-3.0	SR-10J
ST16-GST3.175-90	3.175	16	-	90	17.5	24	40	-		TR-3.0	
ST16-GST4-90	4	16	-	90	21	26	40	-		TR-3.0	
ST16-GST6-90	6	16	-	90	23	29	37	-		TR-3.0	

ST22	D1	D2	D3	L1	L2	L3	L4	L5	Shape	Wrench	Type of machine
ST22-GST3-110	3	22	-	110	17.5	24	40	-		TR-4.0	12 / 20 SERIES
ST22-GST4-110	4	22	-	110	21	26	40	-		TR-4.0	
ST22-GST6-110	6	22	-	110	23	29	52	-		TR-4.0	
ST22-GST8-110	8	22	-	110	28	34	52	-		TR-4.0	
ST22-GST10-110	10	22	-	110	29.5	36	55	-		TR-4.0	

ST32	D1	D2	D3	L1	L2	L3	L4	L5	Shape	Wrench	Type of machine
ST32-GST3-110	3	32	-	110	17.5	24	40	-		TR-4.0	32 SERIES
ST32-GST4-110	4	32	-	110	21	26	40	-		TR-4.0	
ST32-GST6-110	6	32	-	110	23	29	52	-		TR-4.0	
ST32-GST8-110	8	32	-	110	28	34	52	-		TR-4.0	
ST32-GST10-110	10	32	-	110	29.5	36	55	-		TR-4.0	
ST32-GST12-110	12	32	-	110	31.5	38	58	-		TR-4.0	



ST16/ ST22/ ST32

Back Type

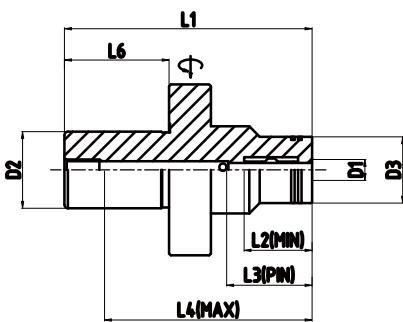


Dimensions(mm)

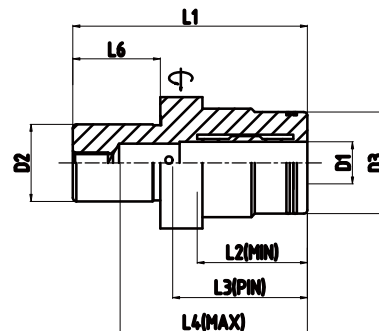
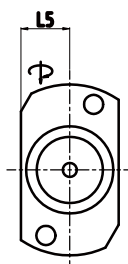
ST22	D1	D2	D3	L1	L2	L3	L4	L5	L6	Wrench	Type of machine
ST22-GST4-25/66A	4	22	19	66	21	25	56	14	25	TR-4.0	
ST22-GST6-25/66A	6	22	20	66	23	30	47	14	25	TR-4.0	
ST22-GST8-25/66A	8	22	23	66	28	34	51	15	25	TR-4.0	12/ 20 SERIES
ST22-GST10-25/66A	10	22	27	66	29.5	36	52	16	25	TR-4.0	
ST22-GST12-25/66A	12	22	29	66	31.5	42	56	17.25	25	TR-4.0	

ST22	D1	D2	D3	L1	L2	L3	L4	L5	L6	Wrench	Type of machine
ST22-GST4-25/66B	4	22	19	66	21	25	56	16.25	25	TR-4.0	
ST22-GST6-25/66B	6	22	20	66	23	30	47	16.25	25	TR-4.0	
ST22-GST8-25/66B	8	22	23	66	28	34	51	16.25	25	TR-4.0	SW20/ SR20IV
ST22-GST10-25/66B	10	22	27	66	29.5	36	52	16.25	25	TR-4.0	
ST22-GST12-25/66B	12	22	29	66	31.5	42	52	17.25	25	TR-4.0	

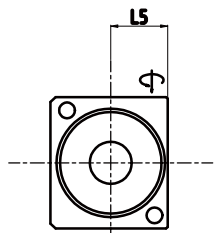
- »h6 shank tools must be used.
- »T-wrench is must be ordered separately.
- »The inner diameter 8 and 12 can be used with various tools by using the hydro-sleeve.
- »All products center through coolant system.(All item Coolant M6x1.0)
- »Additional sizes and special designs available on request.



ST22-A



ST22-B



SWISS TURN

Front Type

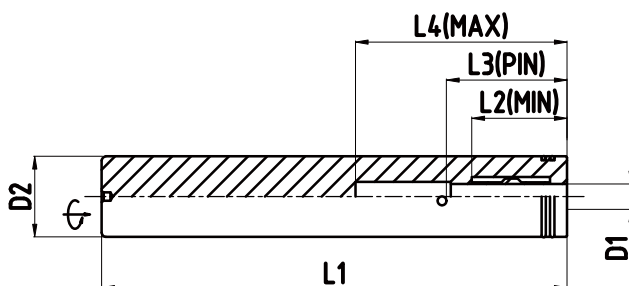


≡ Dimensions(mm)

ST16	D1	D2	D3	L1	L2	L3	L4	L5	Shape	Wrench	Type of machine
ST16-GST3-50	3	16	-	50	17.5	24	28	-		TR-3.0	P01 /P03
ST16-GST3.175-50	3.175	16	-	50	17.5	24	28	-		TR-3.0	
ST16-GST4-50	4	16	-	50	21	26	28	-		TR-3.0	

ST20	D1	D2	D3	L1	L2	L3	L4	L5	Shape	Wrench	Type of machine
ST20-GST3-110	3	20	-	110	17.5	24	40	-		TR-3.0	BO12 /20 /S20 SERIES
ST20-GST4-110	4	20	-	110	21	26	40	-		TR-3.0	
ST20-GST6-110	6	20	-	110	23	29	52	-		TR-3.0	
ST20-GST8-110	8	20	-	110	28	34	52	-		TR-3.0	

ST25	D1	D2	D3	L1	L2	L3	L4	L5	Shape	Wrench	Type of machine
ST25-GST3-110	3	25	-	110	17.5	24	40	-		TR-4.0	32 SERIES
ST25-GST4-110	4	25	-	110	21	26	40	-		TR-4.0	
ST25-GST6-110	6	25	-	110	23	29	52	-		TR-4.0	
ST25-GST8-110	8	25	-	110	28	34	52	-		TR-4.0	
ST25-GST10-110	10	25	-	110	29.5	36	55	-		TR-4.0	
ST25-GST12-110	12	25	-	110	31.5	38	58	-		TR-4.0	



ST16/ ST20/ ST25

Back Type

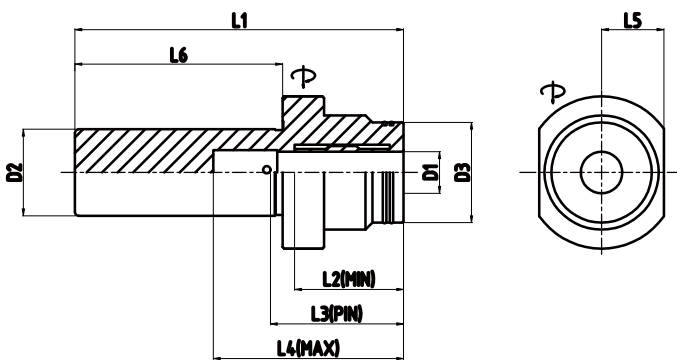


≡ Dimensions(mm)

ST20	D1	D2	D3	L1	L2	L3	L4	L5	L6	Wrench	Type of machine
ST20-GST4-40/75	4	20	19	75	21	26	46	14	40	TR-4.0	BO12 /20 /S20 SERIES
ST20-GST6-40/75	6	20	20	75	23	29	51	15	40	TR-4.0	
ST20-GST8-40/75	8	20	23	75	28	36	51	16	40	TR-4.0	
ST20-GST10-40/75	10	20	27	75	29.5	36	56	17	40	TR-4.0	

ST25	D1	D2	D3	L1	L2	L3	L4	L5	L6	Wrench	Type of machine
ST25-GST4-60/95	4	25	19	95	21	26	46	14	60	TR-4.0	32 SERIES
ST25-GST6-60/95	6	25	20	95	23	29	51	15	60	TR-4.0	
ST25-GST8-60/95	8	25	23	95	28	34	51	16	60	TR-4.0	
ST25-GST10-60/95	10	25	27	95	29.5	36	56	17	60	TR-4.0	
ST25-GST12-60/95	12	25	29	95	31.5	38	56	18	60	TR-4.0	

- »h6 shank tools must be used.
- »T-wrench is must be ordered separately.
- »The inner diameter 8 and 12 can be used with various tools by using the hydro-sleeve.
- »All products center through coolant system.(All item Coolant M6x1.0)
- »Additional sizes and special designs available on request.
























ST20/ ST25

Front Type

TORNOS

 Dimensions(mm)

ST16	D1	D2	D3	L1	L2	L3	L4	L5	Shape	Wrench	Type of machine
ST16-GST3-50	3	16	-	50	17.5	24	28	-		TR-3.0	MICRO 7/8
ST16-GST3.175-50	3.175	16	-	50	17.5	24	28	-		TR-3.0	
ST16-GST4-50	4	16	-	50	21	26	28	-		TR-3.0	
ST16-GST3-90	3	16	-	90	17.5	24	40	-		TR-3.0	SWISS NANO SERIES
ST16-GST3.175-90	3.175	16	-	90	17.5	24	40	-		TR-3.0	
ST16-GST4-90	4	16	-	90	21	26	40	-		TR-3.0	
ST16-GST6-90	6	16	-	90	23	29	37	-		TR-3.0	
ST20											
ST20-GST3-110	3	20	-	110	17.5	24	40	-		TR-3.0	GAMMA20
ST20-GST4-110	4	20	-	110	21	26	40	-		TR-3.0	
ST20-GST6-110	6	20	-	110	23	29	52	-		TR-3.0	
ST20-GST8-110	8	20	-	110	28	34	52	-		TR-3.0	
ST22											
ST22-GST3-110	3	22	-	110	17.5	24	40	-		TR-4.0	DELTA 20 GAMMA 20
ST22-GST4-110	4	22	-	110	21	26	40	-		TR-4.0	
ST22-GST6-110	6	22	-	110	23	29	52	-		TR-4.0	
ST22-GST8-110	8	22	-	110	28	34	52	-		TR-4.0	
ST22-GST10-110	10	22	-	110	29.5	36	55	-		TR-4.0	
ST25											
ST25-GST3-110	3	25	-	110	17.5	24	40	-		TR-4.0	DECO (7/10/13/20)
ST25-GST4-110	4	25	-	110	21	26	40	-		TR-4.0	
ST25-GST6-110	6	25	-	110	23	29	52	-		TR-4.0	
ST25-GST8-110	8	25	-	110	28	34	52	-		TR-4.0	
ST25-GST10-110	10	25	-	110	29.5	36	55	-		TR-4.0	
ST25-GST12-110	12	25	-	110	31.5	38	58	-		TR-4.0	

Back Type

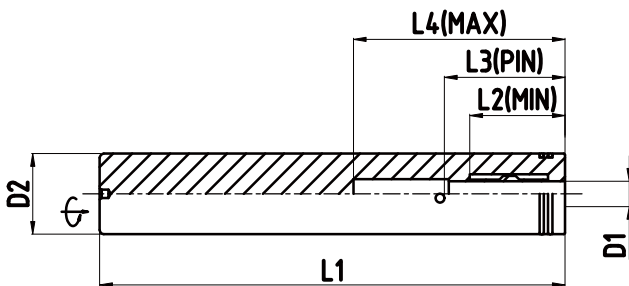
TORNOS

≡ Dimensions(mm)

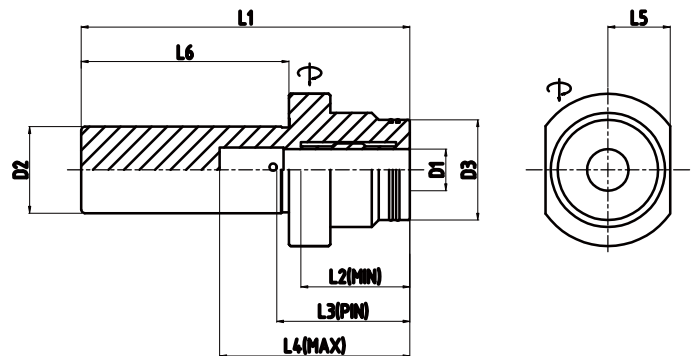
ST20	D1	D2	D3	L1	L2	L3	L4	L5	L6	Wrench	Type of machine
ST20-GST4-40/75	4	20	19	75	21	26	46	14	40	TR-4.0	GT13/ GT26 GAMMA20
ST20-GST6-40/75	6	20	20	75	23	29	51	15	40	TR-4.0	
ST20-GST8-40/75	8	20	23	75	28	36	51	16	40	TR-4.0	
ST20-GST10-40/75	10	20	27	75	29.5	36	56	17	40	TR-4.0	

ST25	D1	D2	D3	L1	L2	L3	L4	L5	L6	Wrench	Type of machine
ST25-GST4-60/95	4	25	19	95	21	26	46	14	60	TR-4.0	DECO (7/10/13/20)
ST25-GST6-60/95	6	25	20	95	23	29	51	15	60	TR-4.0	
ST25-GST8-60/95	8	25	23	95	28	34	51	16	60	TR-4.0	
ST25-GST10-60/95	10	25	27	95	29.5	36	56	17	60	TR-4.0	
ST25-GST12-60/95	12	25	29	95	31.5	38	56	18	60	TR-4.0	

- »h6 shank tools must be used.
- »T-wrench is must be ordered separately.
- »The inner diameter 8 and 12 can be used with various tools by using the hydro-sleeve.
- »All products center through coolant system.(All item Coolant M6x1.0)
- »Additional sizes and special designs available on request.



ST16/ ST20/ ST22/ ST25



ST20/ ST25

Front Type

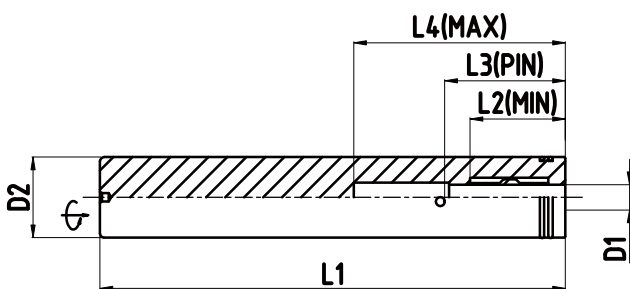


Dimensions(mm)

ST20	D1	D2	D3	L1	L2	L3	L4	L5	Shape	Wrench	Type of machine
ST20-GST3-110	3	20	-	110	17.5	24	40	-		TR-3.0	SL12H
ST20-GST4-110	4	20	-	110	21	26	40	-		TR-3.0	
ST20-GST6-110	6	20	-	110	23	29	52	-		TR-3.0	
ST20-GST8-110	8	20	-	110	28	34	52	-		TR-3.0	

ST25	D1	D2	D3	L1	L2	L3	L4	L5	Shape	Wrench	Type of machine
ST25-GST3-110	3	25	-	110	17.5	24	40	-		TR-4.0	20 SERIES
ST25-GST4-110	4	25	-	110	21	26	40	-		TR-4.0	
ST25-GST6-110	6	25	-	110	23	29	52	-		TR-4.0	
ST25-GST8-110	8	25	-	110	28	34	52	-		TR-4.0	
ST25-GST10-110	10	25	-	110	29.5	36	55	-		TR-4.0	
ST25-GST12-110	12	25	-	110	31.5	38	58	-		TR-4.0	

ST32	D1	D2	D3	L1	L2	L3	L4	L5	Shape	Wrench	Type of machine
ST32-GST3-110	3	32	-	110	17.5	24	40	-		TR-4.0	32 SERIES
ST32-GST4-110	4	32	-	110	21	26	40	-		TR-4.0	
ST32-GST6-110	6	32	-	110	23	29	52	-		TR-4.0	
ST32-GST8-110	8	32	-	110	28	34	52	-		TR-4.0	
ST32-GST10-110	10	32	-	110	29.5	36	55	-		TR-4.0	
ST32-GST12-110	12	32	-	110	31.5	38	58	-		TR-4.0	



ST20/ ST25/ ST32

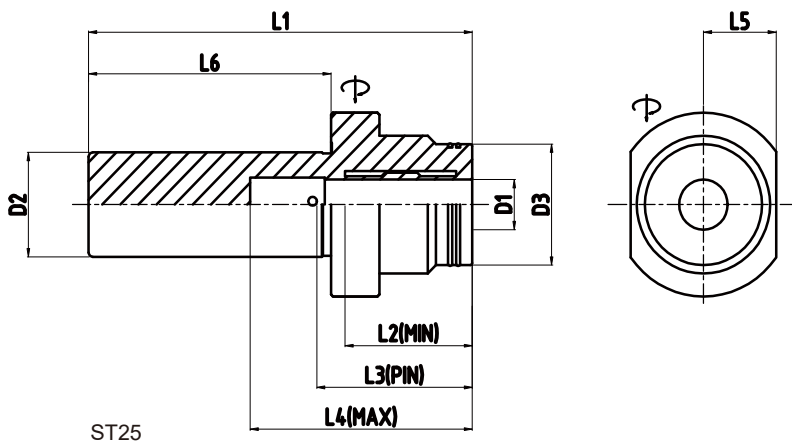
Back Type



≡ Dimensions(mm)

ST25	D1	D2	D3	L1	L2	L3	L4	L5	L6	Wrench	Type of machine
ST25-GST4-60/95	4	25	19	95	21	26	46	14	60	TR-4.0	12/ 20/ 32 SERIES
ST25-GST6-60/95	6	25	20	95	23	29	51	15	60	TR-4.0	
ST25-GST8-60/95	8	25	23	95	28	34	51	16	60	TR-4.0	
ST25-GST10-60/95	10	25	27	95	29.5	36	56	17	60	TR-4.0	
ST25-GST12-60/95	12	25	29	95	31.5	38	56	18	60	TR-4.0	

- »h6 shank tools must be used.
- »T-wrench is must be ordered separately.
- »The inner diameter 8 and 12 can be used with various tools by using the hydro-sleeve.
- »All products center through coolant system.(All item Coolant M6x1.0)
- »Additional sizes and special designs available on request.



HYDRO-SWISS TURN

ST | Cylindrical

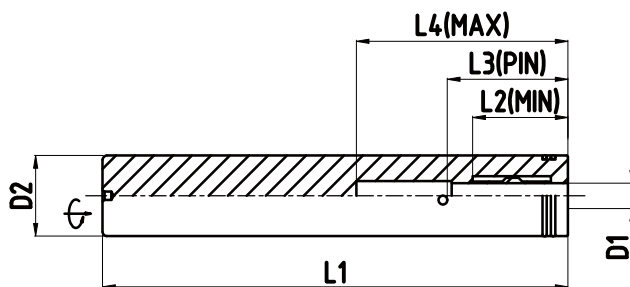
Front Type



≡ Dimensions(mm)

ST22	D1	D2	D3	L1	L2	L3	L4	L5	Shape	Wrench	Type of machine
ST22-GST3-110	3	22	-	110	17.5	24	40	-		TR-4.0	NN-20 SERIES
ST22-GST4-110	4	22	-	110	21	26	40	-		TR-4.0	
ST22-GST6-110	6	22	-	110	23	29	52	-		TR-4.0	
ST22-GST8-110	8	22	-	110	28	34	52	-		TR-4.0	
ST22-GST10-110	10	22	-	110	29.5	36	55	-		TR-4.0	

ST32	D1	D2	D3	L1	L2	L3	L4	L5	Shape	Wrench	Type of machine
ST32-GST3-110	3	32	-	110	17.5	24	40	-		TR-4.0	NN-32 SERIES
ST32-GST4-110	4	32	-	110	21	26	40	-		TR-4.0	
ST32-GST6-110	6	32	-	110	23	29	52	-		TR-4.0	
ST32-GST8-110	8	32	-	110	28	34	52	-		TR-4.0	
ST32-GST10-110	10	32	-	110	29.5	36	55	-		TR-4.0	
ST32-GST12-110	12	32	-	110	31.5	38	58	-		TR-4.0	



ST22/ ST32

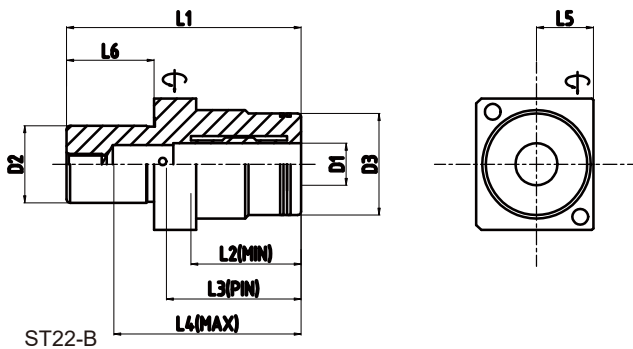
Back Type



≡ Dimensions(mm)

ST22	D1	D2	D3	L1	L2	L3	L4	L5	L6	Wrench	Type of machine
ST22-GST4-25/66B	4	22	19	66	21	25	56	16.25	25	TR-4.0	For common use
ST22-GST6-25/66B	6	22	20	66	23	30	47	16.25	25	TR-4.0	
ST22-GST8-25/66B	8	22	23	66	28	34	51	16.25	25	TR-4.0	
ST22-GST10-25/66B	10	22	27	66	29.5	36	52	16.25	25	TR-4.0	
ST22-GST12-25/66B	12	22	29	66	31.5	42	52	17.25	25	TR-4.0	

- »h6 shank tools must be used.
- »T-wrench is must be ordered separately.
- »The inner diameter 8 and 12 can be used with various tools by using the hydro-sleeve.
- »All products center through coolant system.(All item Coolant M6x1.0)
- »Additional sizes and special designs available on request.



Front Type



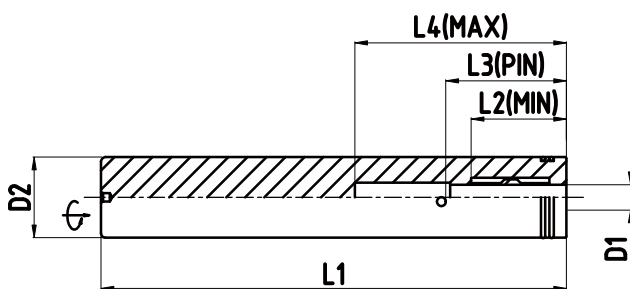
≡ Dimensions(mm)

ST19.05	D1	D2	D3	L1	L2	L3	L4	L5	Shape	Wrench	Type of machine
ST19.05-GST3-110	3	19.05	-	110	17.5	24	40	-		TR-3.0	Depending on Machine
ST19.05-GST4-110	4	19.05	-	110	21	26	40	-		TR-3.0	
ST19.05-GST6-110	6	19.05	-	110	23	29	52	-		TR-3.0	
ST19.05-GST8-110	8	19.05	-	110	28	34	52	-		TR-3.0	

ST25	D1	D2	D3	L1	L2	L3	L4	L5	Shape	Wrench	Type of machine
ST25-GST3-110	3	25	-	110	17.5	24	40	-		TR-4.0	Depending on Machine
ST25-GST4-110	4	25	-	110	21	26	40	-		TR-4.0	
ST25-GST6-110	6	25	-	110	23	29	52	-		TR-4.0	
ST25-GST8-110	8	25	-	110	28	34	52	-		TR-4.0	
ST25-GST10-110	10	25	-	110	29.5	36	55	-		TR-4.0	
ST25-GST12-110	12	25	-	110	31.5	38	58	-		TR-4.0	

ST32	D1	D2	D3	L1	L2	L3	L4	L5	Shape	Wrench	Type of machine
ST32-GST3-110	3	32	-	110	17.5	24	40	-		TR-4.0	Depending on Machine
ST32-GST4-110	4	32	-	110	21	26	40	-		TR-4.0	
ST32-GST6-110	6	32	-	110	23	29	52	-		TR-4.0	
ST32-GST8-110	8	32	-	110	28	34	52	-		TR-4.0	
ST32-GST10-110	10	32	-	110	29.5	36	55	-		TR-4.0	
ST32-GST12-110	12	32	-	110	31.5	38	58	-		TR-4.0	

SWISS TURN



ST19.05/ ST22/ ST32

Back Type

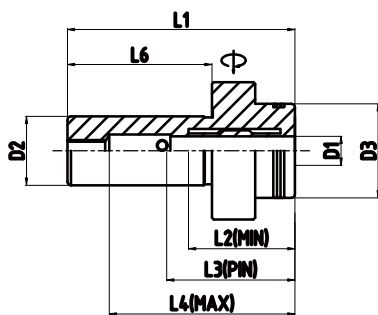
NEXTURN
SWISS TURN LEADER

Dimensions(mm)

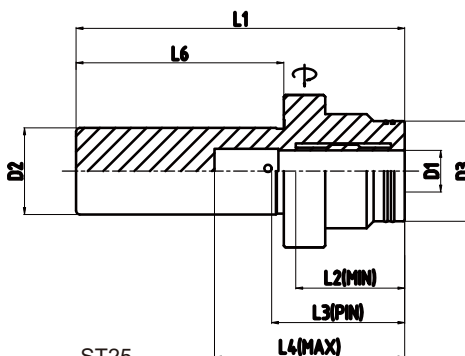
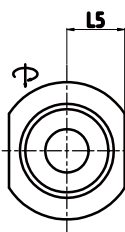
ST19.05	D1	D2	D3	L1	L2	L3	L4	L5	L6	Wrench	Type of machine
ST19.05-GST3-40/63	3	19.05	20	63	17.5	24	53	13.5	40	TR-4.0	Depending on Machine
ST19.05-GST4-40/63	4	19.05	22	63	21	26	53	14	40	TR-4.0	
ST19.05-GST6-40/63	6	19.05	24	63	23	29	53	15	40	TR-4.0	
ST19.05-GST8-40/63	8	19.05	26	63	28	34	53	16	40	TR-4.0	
ST19.05-GST10-40/63	10	19.05	28	63	29.5	36	53	17	40	TR-4.0	

ST25	D1	D2	D3	L1	L2	L3	L4	L5	L6	Wrench	Type of machine
ST25-GST4-60/95	4	25	19	95	21	26	46	14	60	TR-4.0	Depending on Machine
ST25-GST6-60/95	6	25	20	95	23	29	51	15	60	TR-4.0	
ST25-GST8-60/95	8	25	23	95	28	34	51	16	60	TR-4.0	
ST25-GST10-60/95	10	25	27	95	29.5	36	56	17	60	TR-4.0	
ST25-GST12-60/95	12	25	29	95	31.5	38	56	18	60	TR-4.0	

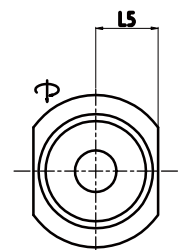
- »h6 shank tools must be used.
- »T-wrench is must be ordered separately.
- »The inner diameter 8 and 12 can be used with various tools by using the hydro-sleeve.
- »All products center through coolant system.(All item Coolant M6x1.0)
- »Additional sizes and special designs available on request.



ST19.05



ST25



SWISS TURN

Options

Hydro-sleeve



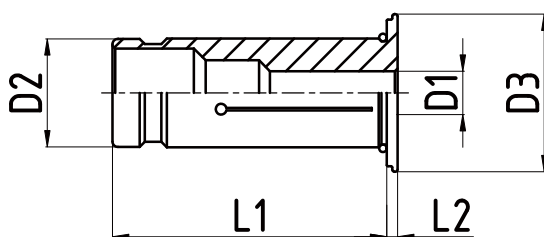
Coolant type

Dimensions(mm)

OD8	D1	D2	D3	L1	L2	Kg.
OD8-3	3	8	12.5	35.5	2	0.1
OD8-4	4	8	12.5	35.5	2	0.1
OD8-5	5	8	12.5	35.5	2	0.1
OD8-6	6	8	12.5	35.5	2	0.1

OD12	D1	D2	D3	L1	L2	Kg.
OD12-3	3	12	19	45	2	0.1
OD12-4	4	12	19	45	2	0.1
OD12-5	5	12	19	45	2	0.1
OD12-6	6	12	19	45	2	0.1
OD12-7	7	12	19	45	2	0.1
OD12-8	8	12	19	45	2	0.1
OD12-9	9	12	19	45	2	0.1
OD12-10	10	12	19	45	2	0.1


- »All shank tools must be used.
- »Internal Coolant type Run-out 3xd 3Micron all items.
- »Additional sizes and special designs available on request.
- »Applied when using oil hole type tools.
- »Recommended for use in precise work.
- »All types of shank can be used.(Stright, Flat, Whistle notch)



OD8/ OD12

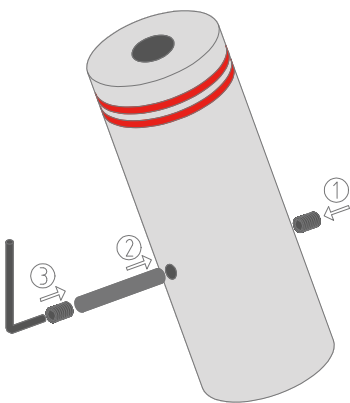
Torque T-wrench (5.5Nm)



TR		Applied product
TR-3.0	3mm	ST16 /ST19.05/ ST20
TR-4.0	4mm	ST22/ ST25/ ST25.4 /ST32

- »5.5Nm torque.
- »Extended hydraulic piston and parts life.
- »Capable of clamping with constant force.

Positioning PIN KIT



PP kit	Applied product
P2.5X8	ST16
P2.5X12	ST19.05 ST20
P2.5X14	ST22
P2.5X16	ST25 ST25.4 ST32

- »Kit Components
- M3x0.5 3mm, Bolt x 4pcs.
- Pin x 2pcs.
- 1.5mm L wrench X 1pcs.